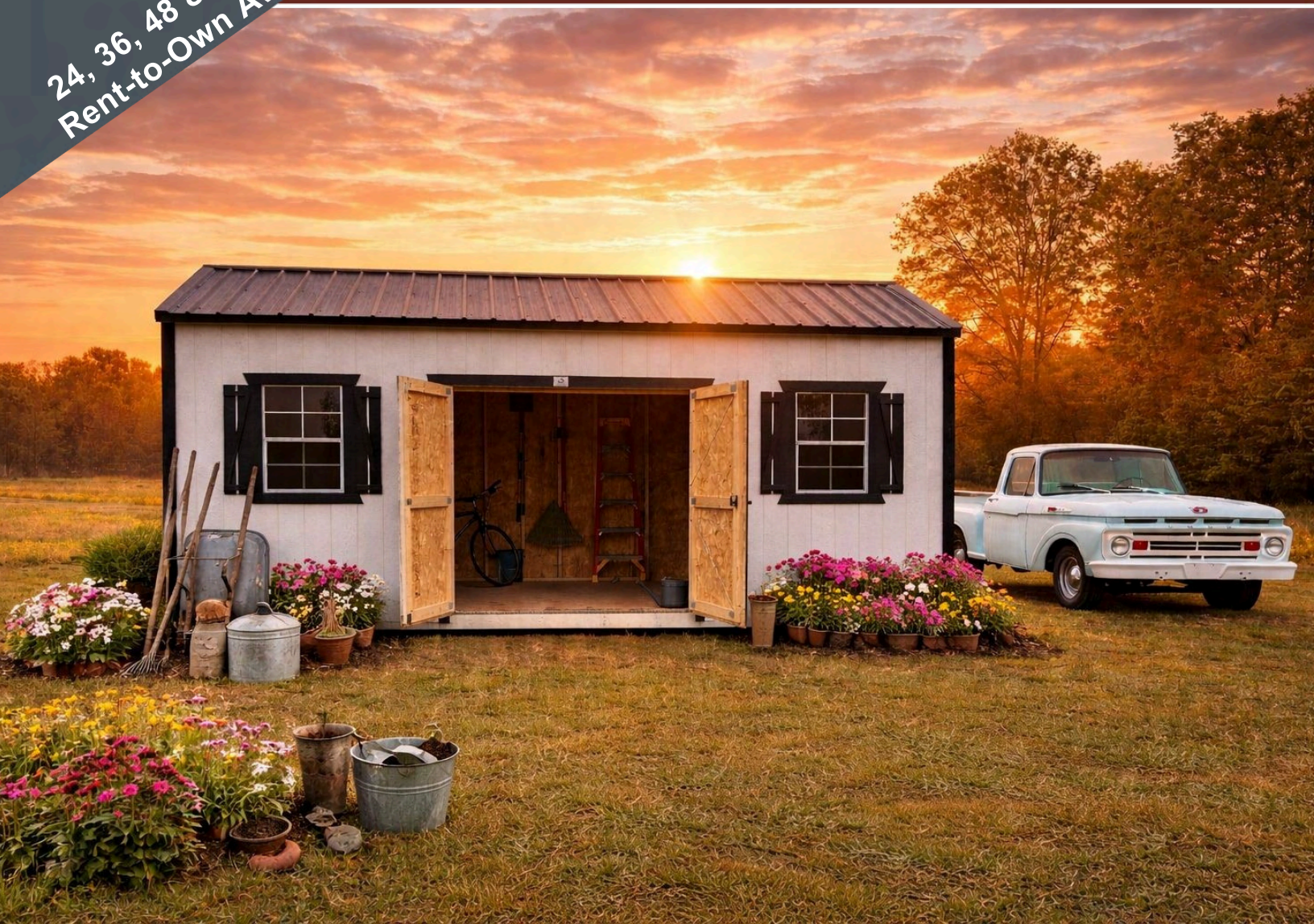


24, 36, 48 & 60 Month
Rent-to-Own Available

QUALITY YOU CAN TRUST



H & S Portable Buildings

Spring / Summer 2026 Catalog

THINGS YOU NEED TO KNOW BEFORE YOU BUY

Site Preparation

You (The customer) are responsible for leveling blocks. (A great rule to go by is 1 block per foot of building length for 8' and 10' wide units, and 2 blocks per foot of building length for 12', 14', and 16' wide units)

This number can vary depending on how level your site is.

For Buildings elevated to 2 blocks high, double the amount of blocks.

Inadequate blocks may result in voided warranty.



4-in W x 8-in H x 16-in L Concrete Block

Deliveries

Free delivery and set up within 50 miles from any **H & S Portable Buildings** dealer. Over 50 miles, additional mileage charges will apply. Customer will be responsible for any obstructions including fences, trees, ditches etc. **H & S Portable Buildings, H & S Deliveries, or any associated parties, or companies** are not responsible for any damages to yards, driveways, underground utilities or pipelines. Please allow up to 3-6 weeks to be contacted for delivery on all new order buildings. Buildings with electrical and customization, may take additional time to ensure we provide you with the best quality.



Rent To Own

Rent to own is available on most units in 24, 36, 48, and 60 month installments with low down payments, no credit check, and a 90 days same as cash option.

Permits

H & S Portable Buildings is not responsible for any building permits, homeowners association rules or covenants.

Customer will be responsible for obtaining any permits, licenses and right of ways to property.

Tiny Homes

We do not provide engineered plans for our sheds so it is your responsibility to check your local laws and state regulations for your area.

Warranty

Our 5 Year Craftsmanship warranty covers material defects and craftsmanship errors. Normal aging of materials, paint fade, fire or storm damage is excluded. Warranty does not cover damages occurred after delivery or set up that is unrelated to the quality or construction of material. Warranty start date is found in the last 6 digits of the serial number. To make a claim, customer must have serial number of unit and also be the original owner or purchaser. H&S Portable Buildings reserves the right to determine if each or all claims are warranty related.

BUILDING FEATURES

4x6 Ground Skids Notched and Pressure Treated

2x6 Exterior Grade Floor Joists every 16"

(8' wide buildings have 2x4 exterior grade floor joists every 16")

5/8" LP Shed Floor with SmartFinish

3/8" LP Smartside Painted or Stained (no additional charge)

10-Year Non-Fade Haley Paint Guarantee

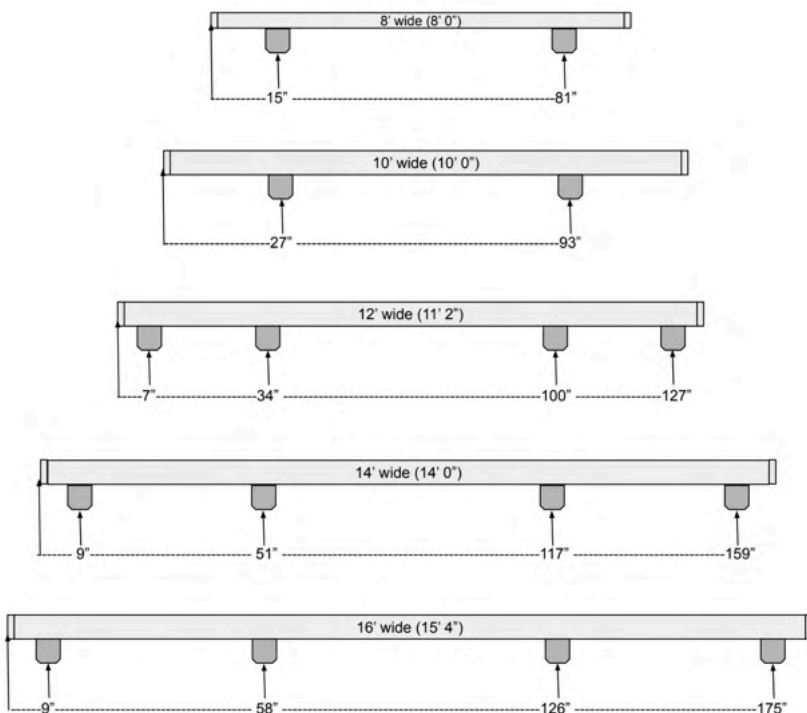
Premium 2x4 Studs every 16"

29 Gauge Steel Roofing with a 40 Year Factory Warranty

All Ridges are Vented and Screened to Prevent Rodents

Double Top Plated Walls

BUILDING FLOOR WIDTHS



DIMENSIONS

Due to D.O.T. regulations our 12' and 16' wide buildings are labeled with nominal values that are not the exact measurements of the interior or exterior widths.

STUDIO SHED



Colors Pictured:
Siding - Deep Ocean
Trim - Deep Ocean
Roof - Burnished Slate

Size	Retail	24 mo	36 mo	48 mo	60 mo
8x12	\$6,728.00	\$431.28	\$311.48	\$269.12	\$249.19
8x16	\$8,308.00	\$532.56	\$384.63	\$332.32	\$307.70
10X12	\$7,308.00	\$468.46	\$338.33	\$292.32	\$270.67
10X16	\$8,988.00	\$576.15	\$416.11	\$359.52	\$332.89
10X20	\$10,299.00	\$660.19	\$476.81	\$411.96	\$381.44
12X16	\$9,608.00	\$615.90	\$444.81	\$384.32	\$355.85
12X20	\$11,069.00	\$709.55	\$512.45	\$442.76	\$409.96
12X24	\$12,490.00	\$800.64	\$578.24	\$499.60	\$462.59
12X28	\$13,720.00	\$879.49	\$635.19	\$548.80	\$508.15
12X32	\$15,001.00	\$961.60	\$694.49	\$600.04	\$555.59
12X36	\$16,772.00	\$1,075.13	\$776.48	\$670.88	\$621.19
14X20	\$14,591.00	\$935.32	\$675.51	\$583.64	\$540.41
14X24	\$15,412.00	\$987.95	\$713.52	\$616.48	\$570.81
14X28	\$16,863.00	\$1,080.96	\$780.69	\$674.52	\$624.56
14X32	\$18,263.00	\$1,170.71	\$845.51	\$730.52	\$676.41
14X36	\$19,904.00	\$1,275.90	\$921.48	\$796.16	\$737.19
14X40	\$21,405.00	\$1,372.12	\$990.97	\$856.20	\$792.78

- 18"x29" Thermal Transom Windows
- 36"x48" Casement (Crank) Windows
- 6" Flush Mount LED Lights
- Active French Doors
- Single Slope Roof

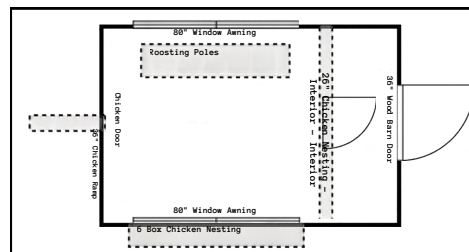
CHICKEN COOP

Colors Pictured:
Siding - Mountain Red
Trim - Navajo White
Roof - Charcoal



Size	Retail	24 mo	36 mo	48 mo	60 mo
8x12	\$4,995.00	\$320.19	\$231.25	\$199.80	NA

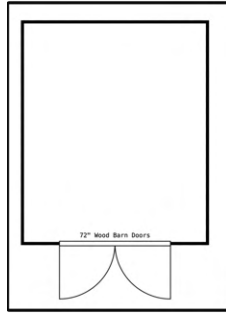
- (2) 80" Window Awnings
- 36" Barn Door
- 6 Box Chicken Nesting
- Chicken Door
- 36" Chicken Ramp
- 8' Interior Chicken Wire Wall with 26" Door
- Painted Interior



UTILITY



Colors Pictured:
Siding - Zook Gray
Trim - White
Roof - Charcoal

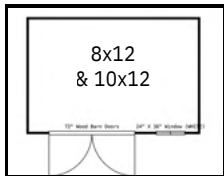


- 6' Wood Double Doors (72" clearance)
- 92" Wall Height
- 8x12 and 10x12 is 80" Wall Height
- 5/12 Roof Pitch

12' Wide Floor Width: 11'2". Eave to eave: 12'
16' Wide Floor Width: 15'4". Eave to eave: 16'

Size	Retail	24 mo	36 mo	48 mo	60 mo
8x12	\$2,895.00	\$185.58	\$134.03	\$115.80	NA
8x16	\$3,565.00	\$228.53	\$165.05	\$142.60	NA
10X12	\$3,380.00	\$216.67	\$156.48	\$135.20	NA
10X16	\$4,170.00	\$267.31	\$193.06	\$166.80	NA
10X20	\$5,000.00	\$320.51	\$231.48	\$200.00	\$185.19
12X16	\$4,945.00	\$316.99	\$228.94	\$197.80	NA
12X20	\$5,920.00	\$379.49	\$274.07	\$236.80	\$219.26
12X24	\$6,765.00	\$433.65	\$313.19	\$270.60	\$250.56
12X28	\$7,665.00	\$491.35	\$354.86	\$306.60	\$283.89
12X32	\$8,595.00	\$550.96	\$397.92	\$343.80	\$318.33
12X36	\$9,500.00	\$608.97	\$439.81	\$380.00	\$351.85
14X16	\$7,165.00	\$459.29	\$331.71	\$286.60	\$265.37
14X20	\$8,195.00	\$525.32	\$379.40	\$327.80	\$303.52
14X24	\$9,165.00	\$587.50	\$424.31	\$366.60	\$339.44
14X28	\$10,065.00	\$645.19	\$465.97	\$402.60	\$372.78
14X32	\$10,995.00	\$704.81	\$509.03	\$439.80	\$407.22
14X36	\$11,965.00	\$766.99	\$553.94	\$478.60	\$443.15
14X40	\$12,895.00	\$826.60	\$596.99	\$515.80	\$477.59
14x44	\$13,895.00	\$890.71	\$643.29	\$555.80	\$514.63
14x48	\$14,895.00	\$954.81	\$689.58	\$595.80	\$551.67
16x24	\$10,065.00	\$645.19	\$465.97	\$402.60	\$372.78
16x28	\$11,065.00	\$709.29	\$512.27	\$442.60	\$409.81
16x32	\$12,095.00	\$775.32	\$559.95	\$483.80	\$447.96
16x36	\$13,165.00	\$843.91	\$609.49	\$526.60	\$487.59
16x40	\$14,195.00	\$909.94	\$657.18	\$567.80	\$525.74
16x44	\$15,265.00	\$978.53	\$706.71	\$610.60	\$565.37
16x48	\$16,295.00	\$1,044.55	\$754.40	\$651.80	\$603.52
16x52	\$17,395.00	\$1,115.06	\$805.32	\$695.80	\$644.26
16x56	\$18,395.00	\$1,179.17	\$851.62	\$735.80	\$681.30
16x60	\$19,465.00	\$1,247.76	\$901.16	\$778.60	\$720.93

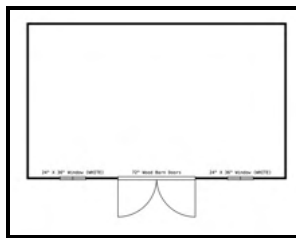
GARDEN SHED



Colors Pictured:
Siding - Zook Gray
Trim - Light Stone
Roof - Light Stone



Colors Pictured:
Siding - Shale
Trim - Light Stone
Roof - Galvalume



- (2) 24"x36" Windows
- 6' Wood Double Doors (72" clearance)
- 92" Wall Height
- 5/12 Roof Pitch
- 8x12 and 10x12 Only Include (1) 24" x 36" Window and 80" Wall Height.

12' Wide Floor Width: 11'2". Eave to eave: 12'
16' Wide Floor Width: 15'4". Eave to eave: 16'

Size	Retail	24 mo	36 mo	48 mo	60 mo
8x12	\$3,010.00	\$192.95	\$139.35	\$120.40	NA
8x16	\$3,795.00	\$243.27	\$175.69	\$151.80	NA
10X12	\$3,495.00	\$224.04	\$161.81	\$139.80	NA
10X16	\$4,400.00	\$282.05	\$203.70	\$176.00	NA
10X20	\$5,230.00	\$335.26	\$242.13	\$209.20	\$193.70
12X16	\$5,175.00	\$331.73	\$239.58	\$207.00	\$191.67
12X20	\$6,150.00	\$394.23	\$284.72	\$246.00	\$227.78
12X24	\$6,995.00	\$448.40	\$323.84	\$279.80	\$259.07
12X28	\$7,895.00	\$506.09	\$365.51	\$315.80	\$292.41
12X32	\$8,825.00	\$565.71	\$408.56	\$353.00	\$326.85
12X36	\$9,730.00	\$623.72	\$450.46	\$389.20	\$360.37
14X16	\$7,395.00	\$474.04	\$342.36	\$295.80	\$273.89
14X20	\$8,425.00	\$540.06	\$390.05	\$337.00	\$312.04
14X24	\$9,395.00	\$602.24	\$434.95	\$375.80	\$347.96
14X28	\$10,295.00	\$659.94	\$476.62	\$411.80	\$381.30
14X32	\$11,225.00	\$719.55	\$519.68	\$449.00	\$415.74
14X36	\$12,195.00	\$781.73	\$564.58	\$487.80	\$451.67
14X40	\$13,125.00	\$841.35	\$607.64	\$525.00	\$486.11
14x44	\$14,125.00	\$905.45	\$653.94	\$565.00	\$523.15
14x48	\$15,125.00	\$969.55	\$700.23	\$605.00	\$560.19
16x24	\$10,295.00	\$659.94	\$476.62	\$411.80	\$381.30
16x28	\$11,295.00	\$724.04	\$522.92	\$451.80	\$418.33
16x32	\$12,325.00	\$790.06	\$570.60	\$493.00	\$456.48
16x36	\$13,395.00	\$858.65	\$620.14	\$535.80	\$496.11
16x40	\$14,425.00	\$924.68	\$667.82	\$577.00	\$534.26
16x44	\$15,495.00	\$993.27	\$717.36	\$619.80	\$573.89
16x48	\$16,525.00	\$1,059.29	\$765.05	\$661.00	\$612.04
16x52	\$17,625.00	\$1,129.81	\$815.97	\$705.00	\$652.78
16x56	\$18,625.00	\$1,193.91	\$862.27	\$745.00	\$689.81
16x60	\$19,695.00	\$1,262.50	\$911.81	\$787.80	\$729.44

LOFTED BARN

Size	Retail	24 mo	36 mo	48 mo	60 mo
8x12	\$3,460.00	\$221.79	\$160.19	\$138.40	NA
8x16	\$4,200.00	\$269.23	\$194.44	\$168.00	NA
10X12	\$3,975.00	\$254.81	\$184.03	\$159.00	NA
10X16	\$4,795.00	\$307.37	\$221.99	\$191.80	NA
10X20	\$5,695.00	\$365.06	\$263.66	\$227.80	\$210.93
12X16	\$5,665.00	\$363.14	\$262.27	\$226.60	\$209.81
12X20	\$6,595.00	\$422.76	\$305.32	\$263.80	\$244.26
12X24	\$7,465.00	\$478.53	\$345.60	\$298.60	\$276.48
12X28	\$8,465.00	\$542.63	\$391.90	\$338.60	\$313.52
12X32	\$9,265.00	\$593.91	\$428.94	\$370.60	\$343.15
12X36	\$10,165.00	\$651.60	\$470.60	\$406.60	\$376.48
14X16	\$7,865.00	\$504.17	\$364.12	\$314.60	\$291.30
14X20	\$8,865.00	\$568.27	\$410.42	\$354.60	\$328.33
14X24	\$9,765.00	\$625.96	\$452.08	\$390.60	\$361.67
14X28	\$10,765.00	\$690.06	\$498.38	\$430.60	\$398.70
14X32	\$11,765.00	\$754.17	\$544.68	\$470.60	\$435.74
14X36	\$12,765.00	\$818.27	\$590.97	\$510.60	\$472.78
14X40	\$13,765.00	\$882.37	\$637.27	\$550.60	\$509.81
14x44	\$14,765.00	\$946.47	\$683.56	\$590.60	\$546.85
14x48	\$15,695.00	\$1,006.09	\$726.62	\$627.80	\$581.30



Colors Pictured:
Siding - Avocado
Trim - Light Stone
Roof - Light Stone

- 6' Wood Double Doors (72" clearance)
- (2) 4' Loft Sections
- 80" Wall Height

12' Wide Floor Width: 11'2". Eave to eave: 12'



SIDE LOFTED BARN

Size	Retail	24 mo	36 mo	48 mo	60 mo
8x12	\$3,575.00	\$229.17	\$165.51	\$143.00	\$132.41
8x16	\$4,430.00	\$283.97	\$205.09	\$177.20	\$164.07
10X12	\$4,090.00	\$262.18	\$189.35	\$163.60	\$151.48
10X16	\$5,025.00	\$322.12	\$232.64	\$201.00	\$186.11
10X20	\$5,925.00	\$379.81	\$274.31	\$237.00	\$219.44
12X16	\$5,895.00	\$377.88	\$272.92	\$235.80	\$218.33
12X20	\$6,825.00	\$437.50	\$315.97	\$273.00	\$252.78
12X24	\$7,695.00	\$493.27	\$356.25	\$307.80	\$285.00
12X28	\$8,695.00	\$557.37	\$402.55	\$347.80	\$322.04
12X32	\$9,495.00	\$608.65	\$439.58	\$379.80	\$351.67
12X36	\$10,395.00	\$666.35	\$481.25	\$415.80	\$385.00
14X16	\$8,095.00	\$518.91	\$374.77	\$323.80	\$299.81
14X20	\$9,095.00	\$583.01	\$421.06	\$363.80	\$336.85
14X24	\$9,995.00	\$640.71	\$462.73	\$399.80	\$370.19
14X28	\$10,995.00	\$704.81	\$509.03	\$439.80	\$407.22
14X32	\$11,995.00	\$768.91	\$555.32	\$479.80	\$444.26
14X36	\$12,995.00	\$833.01	\$601.62	\$519.80	\$481.30
14X40	\$13,995.00	\$897.12	\$647.92	\$559.80	\$518.33
14x44	\$14,995.00	\$961.22	\$694.21	\$599.80	\$555.37
14x48	\$15,925.00	\$1,020.83	\$737.27	\$637.00	\$589.81

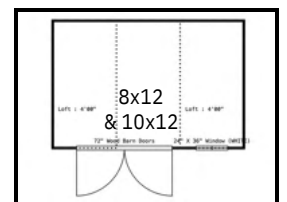
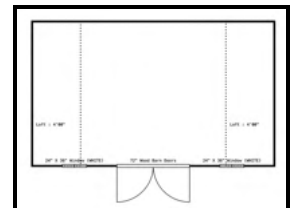


Colors Pictured:
Siding - GP Clay
Trim - Black
Roof - Black

- (2) 24"x36" Windows
- 6' Wood Double Doors (72" clearance)
- (2) 4' Loft Sections
- 80" Wall Height
- 8x12 & 10x12 Only Include (1) 24" x 36" Window



*Shown with 30x36 window



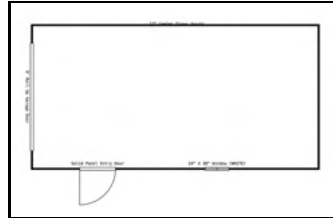
12' Wide Floor Width: 11'2". Eave to eave: 12'

GARAGE



Colors Pictured:
Siding - Riehl Green
Trim - Brown
Roof - Brown

- (1) 24"x36" Window
- Standard Size Solid Panel Entry Door
- 10' Wide - 6'x7' Roll Up Door
- 12' Wide - 8'x7' Roll Up Door
- 14' & 16' Wide - 9'x7' Roll Up Door
- Diamond Plated Roll Up Door Threshold
- 92" Wall Height
- 5/12 Roof Pitch
- 2x6 Exterior Grade Floor Joists Every 12"



12' Wide Floor Width: 11'2". Eave to eave: 12'
16' Wide Floor Width: 15'4". Eave to eave: 16'

Size	Retail	24 mo	36 mo	48 mo	60 mo
10x12	\$4,570.00	\$292.95	\$211.57	\$182.80	NA
10x16	\$5,380.00	\$344.87	\$249.07	\$215.20	\$199.26
10x20	\$6,230.00	\$399.36	\$288.43	\$249.20	\$230.74
12x16	\$6,221.00	\$398.78	\$288.01	\$248.84	\$230.41
12x20	\$7,220.00	\$462.82	\$334.26	\$288.80	\$267.41
12x24	\$8,089.00	\$518.53	\$374.49	\$323.56	\$299.59
12x28	\$9,013.00	\$577.76	\$417.27	\$360.52	\$333.81
12x32	\$9,967.00	\$638.91	\$461.44	\$398.68	\$369.15
12x36	\$10,896.00	\$698.46	\$504.44	\$435.84	\$403.56
14x16	\$8,537.00	\$547.24	\$395.23	\$341.48	\$316.19
14x20	\$9,595.00	\$615.06	\$444.21	\$383.80	\$355.37
14x24	\$10,593.00	\$679.04	\$490.42	\$423.72	\$392.33
14x28	\$11,521.00	\$738.53	\$533.38	\$460.84	\$426.70
14x32	\$12,479.00	\$799.94	\$577.73	\$499.16	\$462.19
14x36	\$13,477.00	\$863.91	\$623.94	\$539.08	\$499.15
14x40	\$14,435.00	\$925.32	\$668.29	\$577.40	\$534.63
14x44	\$15,463.00	\$991.22	\$715.88	\$618.52	\$572.70
14x48	\$16,491.00	\$1,057.12	\$763.47	\$659.64	\$610.78
16x24	\$11,517.00	\$738.27	\$533.19	\$460.68	\$426.56
16x28	\$12,549.00	\$804.42	\$580.97	\$501.96	\$464.78
16x32	\$13,611.00	\$872.50	\$630.14	\$544.44	\$504.11
16x36	\$14,713.00	\$943.14	\$681.16	\$588.52	\$544.93
16x40	\$15,775.00	\$1,011.22	\$730.32	\$631.00	\$584.26
16x44	\$16,877.00	\$1,081.86	\$781.34	\$675.08	\$625.07
16x48	\$17,939.00	\$1,149.94	\$830.51	\$717.56	\$664.41
16x52	\$19,071.00	\$1,222.50	\$882.92	\$762.84	\$706.33
16x56	\$20,103.00	\$1,288.65	\$930.69	\$804.12	\$744.56
16x60	\$21,205.00	\$1,359.29	\$981.71	\$848.20	\$785.37

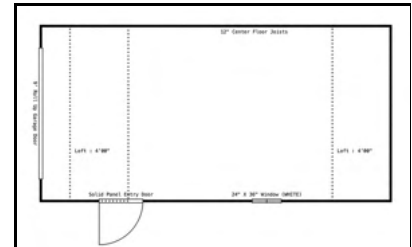
LOFT BARN GARAGE

Colors Pictured:
Siding - White
Trim - White
Roof - Black



- (1) 24"x36" Window
- 36"x73" Solid Panel Entry Door
- 10' Wide - 6'x7' Roll Up Door (6'6" height clearance)
- 12' Wide - 8'x7' Roll Up Door (6'6" height clearance)
- 14' Wide - 9'x7' Roll Up Door (6'6" height clearance)
- Diamond Plated Roll Up Door Threshold
- 80" Wall Height
- 2x6 Exterior Grade Floor Joists Every 12"
- (2) 4' Loft Sections

Size	Retail	24 mo	36 mo	48 mo	60 mo
10X12	\$5,165.00	\$331.09	\$239.12	\$206.60	\$191.30
10X16	\$6,005.00	\$384.94	\$278.01	\$240.20	\$222.41
10X20	\$6,925.00	\$443.91	\$320.60	\$277.00	\$256.48
12X16	\$6,941.00	\$444.94	\$321.34	\$277.64	\$257.07
12X20	\$7,895.00	\$506.09	\$365.51	\$315.80	\$292.41
12X24	\$8,789.00	\$563.40	\$406.90	\$351.56	\$325.52
12X28	\$9,813.00	\$629.04	\$454.31	\$392.52	\$363.44
12X32	\$10,637.00	\$681.86	\$492.45	\$425.48	\$393.96
12X36	\$11,561.00	\$741.09	\$535.23	\$462.44	\$428.19
14X16	\$9,237.00	\$592.12	\$427.64	\$369.48	\$342.11
14X20	\$10,265.00	\$658.01	\$475.23	\$410.60	\$380.19
14X24	\$11,193.00	\$717.50	\$518.19	\$447.72	\$414.56
14X28	\$12,221.00	\$783.40	\$565.79	\$488.84	\$452.63
14X32	\$13,249.00	\$849.29	\$613.38	\$529.96	\$490.70
14X36	\$14,277.00	\$915.19	\$660.97	\$571.08	\$528.78
14X40	\$15,305.00	\$981.09	\$708.56	\$612.20	\$566.85
14x44	\$16,333.00	\$1,046.99	\$756.16	\$653.32	\$604.93
14x48	\$17,291.00	\$1,108.40	\$800.51	\$691.64	\$640.41

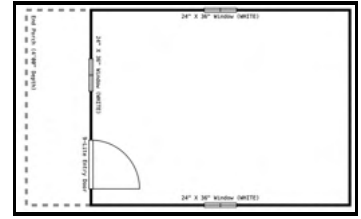


12' Wide Floor Width: 11'2". Eave to eave: 12'

CABIN

Size	Retail	24 mo	36 mo	48 mo	60 mo
8x16	\$4,950.00	\$317.31	\$229.17	\$198.00	NA
10X16	\$5,735.00	\$367.63	\$265.51	\$229.40	\$212.41
10X20	\$6,565.00	\$420.83	\$303.94	\$262.60	\$243.15
12X16	\$6,690.00	\$428.85	\$309.72	\$267.60	\$247.78
12X20	\$7,665.00	\$491.35	\$354.86	\$306.60	\$283.89
12X24	\$8,510.00	\$545.51	\$393.98	\$340.40	\$315.19
12X28	\$9,410.00	\$603.21	\$435.65	\$376.40	\$348.52
12X32	\$10,340.00	\$662.82	\$478.70	\$413.60	\$382.96
12X36	\$11,245.00	\$720.83	\$520.60	\$449.80	\$416.48
14X16	\$9,090.00	\$582.69	\$420.83	\$363.60	\$336.67
14X20	\$10,120.00	\$648.72	\$468.52	\$404.80	\$374.81
14X24	\$11,090.00	\$710.90	\$513.43	\$443.60	\$410.74
14X28	\$11,990.00	\$768.59	\$555.09	\$479.60	\$444.07
14X32	\$12,920.00	\$828.21	\$598.15	\$516.80	\$478.52
14X36	\$13,890.00	\$890.38	\$643.06	\$555.60	\$514.44
14X40	\$14,820.00	\$950.00	\$686.11	\$592.80	\$548.89
14x44	\$15,820.00	\$1,014.10	\$732.41	\$632.80	\$585.93
14x48	\$16,820.00	\$1,078.21	\$778.70	\$672.80	\$622.96
16x24	\$12,170.00	\$780.13	\$563.43	\$486.80	\$450.74
16x28	\$13,170.00	\$844.23	\$609.72	\$526.80	\$487.78
16x32	\$14,200.00	\$910.26	\$657.41	\$568.00	\$525.93
16x36	\$15,270.00	\$978.85	\$706.94	\$610.80	\$565.56
16x40	\$16,300.00	\$1,044.87	\$754.63	\$652.00	\$603.70
16x44	\$17,370.00	\$1,113.46	\$804.17	\$694.80	\$643.33
16x48	\$18,400.00	\$1,179.49	\$851.85	\$736.00	\$681.48
16x52	\$19,500.00	\$1,250.00	\$902.78	\$780.00	\$722.22
16x56	\$20,500.00	\$1,314.10	\$949.07	\$820.00	\$759.26
16x60	\$21,570.00	\$1,382.69	\$998.61	\$862.80	\$798.89

Colors Pictured:
Siding - Wild Grasses
Trim - Bronze
Roof - Black
Porch - Canoe
Posts - Black



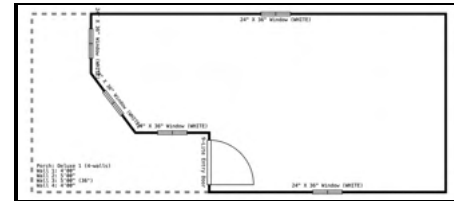
- (3) 24"x36" Windows
- Standard Size 9-lite Entry Door
- Composite 5' Porch
- 92" Wall Height
- 5/12 Roof Pitch

12' Wide Floor Width: 11'2". Eave to eave: 12'
16' Wide Floor Width: 15'4". Eave to eave: 16'

DUTCH CABIN

Size	Retail	24 mo	36 mo	48 mo	60 mo
12X24	\$9,320.00	\$597.44	\$431.48	\$372.80	\$345.19
12X28	\$10,220.00	\$655.13	\$473.15	\$408.80	\$378.52
12X32	\$11,150.00	\$714.74	\$516.20	\$446.00	\$412.96
12X36	\$12,055.00	\$772.76	\$558.10	\$482.20	\$446.48
14X24	\$12,000.00	\$769.23	\$555.56	\$480.00	\$444.44
14X28	\$12,900.00	\$826.92	\$597.22	\$516.00	\$477.78
14X32	\$13,830.00	\$886.54	\$640.28	\$553.20	\$512.22
14X36	\$14,800.00	\$948.72	\$685.19	\$592.00	\$548.15
14X40	\$15,730.00	\$1,008.33	\$728.24	\$629.20	\$582.59
14x44	\$16,730.00	\$1,072.44	\$774.54	\$669.20	\$619.63
14x48	\$17,730.00	\$1,136.54	\$820.83	\$709.20	\$656.67
16x24	\$13,060.00	\$837.18	\$604.63	\$522.40	\$483.70
16x28	\$14,060.00	\$901.28	\$650.93	\$562.40	\$520.74
16x32	\$15,090.00	\$967.31	\$698.61	\$603.60	\$558.89
16x36	\$16,160.00	\$1,035.90	\$748.15	\$646.40	\$598.52
16x40	\$17,190.00	\$1,101.92	\$795.83	\$687.60	\$636.67
16x44	\$18,260.00	\$1,170.51	\$845.37	\$730.40	\$676.30
16x48	\$19,290.00	\$1,236.54	\$893.06	\$771.60	\$714.44
16x52	\$20,390.00	\$1,307.05	\$943.98	\$815.60	\$755.19
16x56	\$21,390.00	\$1,371.15	\$990.28	\$855.60	\$792.22
16x60	\$22,460.00	\$1,439.74	\$1,039.81	\$898.40	\$831.85

Colors Pictured:
Siding - New Holland Beige
Trim - Black
Roof - Black
Porch - Lake Fog
Posts - Black



- (5) 24"x36" Windows
- Standard Size 9-lite Entry Door
- Composite 5' Dutch Style Porch
- 92" Wall Height
- 5/12 Roof Pitch

12' Wide Floor Width: 11'2". Eave to eave: 12'
16' Wide Floor Width: 15'4". Eave to eave: 16'

LOFTED BARN CABIN



- (3) 24"x36" Windows
- 36"x73" 9-lite Entry Door
- Composite 5' porch
- 80" Wall Height
- (2) 4' Loft Sections

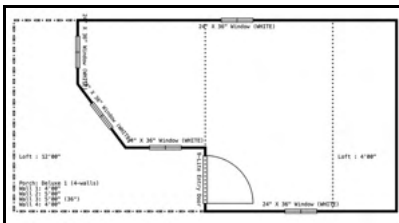
Colors Pictured:
 Siding - Avocado
 Trim - Burnished Slate
 Roof - Burnished Slate
 Porch: Canoe
 Posts: White

Size	Retail	24 mo	36 mo	48 mo	60 mo
8x16	\$5,585.00	\$62.06	\$258.56	\$223.40	\$206.85
10X16	\$6,360.00	\$70.67	\$294.44	\$254.40	\$235.56
10X20	\$7,260.00	\$80.67	\$336.11	\$290.40	\$268.89
12X16	\$7,410.00	\$82.33	\$343.06	\$296.40	\$274.44
12X20	\$8,340.00	\$92.67	\$386.11	\$333.60	\$308.89
12X24	\$9,210.00	\$102.33	\$426.39	\$368.40	\$341.11
12X28	\$10,210.00	\$113.44	\$472.69	\$408.40	\$378.15
12X32	\$11,010.00	\$122.33	\$509.72	\$440.40	\$407.78
12X36	\$11,910.00	\$132.33	\$551.39	\$476.40	\$441.11
14X16	\$9,790.00	\$108.78	\$453.24	\$391.60	\$362.59
14X20	\$10,790.00	\$119.89	\$499.54	\$431.60	\$399.63
14X24	\$11,690.00	\$129.89	\$541.20	\$467.60	\$432.96
14X28	\$12,690.00	\$141.00	\$587.50	\$507.60	\$470.00
14X32	\$13,690.00	\$152.11	\$633.80	\$547.60	\$507.04
14X36	\$14,690.00	\$163.22	\$680.09	\$587.60	\$544.07
14X40	\$15,690.00	\$174.33	\$726.39	\$627.60	\$581.11
14x44	\$16,690.00	\$185.44	\$772.69	\$667.60	\$618.15
14x48	\$17,620.00	\$195.78	\$815.74	\$704.80	\$652.59



12' Wide Floor Width: 11'2". Eave to eave: 12'

DUTCH LOFTED BARN CABIN



Colors Pictured:
 Siding - GP Clay
 Trim - Black
 Roof - Black
 Porch: Lake Fog
 Posts: Black

- (5) 24"x36" Windows
- 36"x73" 9-lite Entry Door
- Composite 5' Dutch Style Porch
- 80" Wall Height
- (1) 12' Loft & (1) 4' Loft Section

Size	Retail	24 mo	36 mo	48 mo	60 mo
12X24	\$10,435.00	\$668.91	\$483.10	\$417.40	\$386.48
12X28	\$11,435.00	\$733.01	\$529.40	\$457.40	\$423.52
12X32	\$12,235.00	\$784.29	\$566.44	\$489.40	\$453.15
12X36	\$13,135.00	\$841.99	\$608.10	\$525.40	\$486.48
14X24	\$13,085.00	\$838.78	\$605.79	\$523.40	\$484.63
14X28	\$14,085.00	\$902.88	\$652.08	\$563.40	\$521.67
14X32	\$15,085.00	\$966.99	\$698.38	\$603.40	\$558.70
14X36	\$16,085.00	\$1,031.09	\$744.68	\$643.40	\$595.74
14X40	\$17,085.00	\$1,095.19	\$790.97	\$683.40	\$632.78
14x44	\$18,085.00	\$1,159.29	\$837.27	\$723.40	\$669.81
14x48	\$19,015.00	\$1,218.91	\$880.32	\$760.60	\$704.26

12' Wide Floor Width: 11'2". Eave to eave: 12'

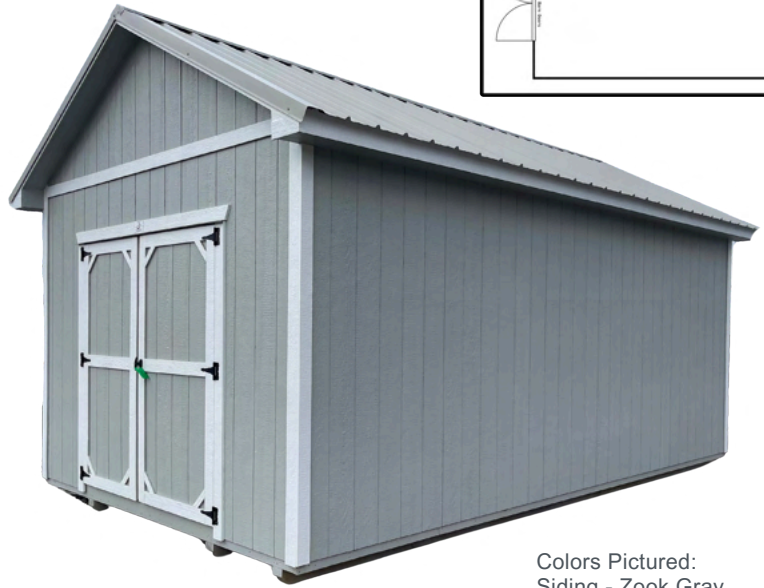
ULTRA SERIES

Size	Retail	24 mo	36 mo	48 mo	60 mo
8x12	\$3,575.00	\$229.17	\$165.51	\$143.00	NA
8x16	\$4,195.00	\$268.91	\$194.21	\$167.80	NA
10X12	\$4,065.00	\$260.58	\$188.19	\$162.60	NA
10X16	\$4,965.00	\$318.27	\$229.86	\$198.60	NA
10X20	\$5,865.00	\$375.96	\$271.53	\$234.60	\$217.22
12X16	\$5,675.00	\$363.78	\$262.73	\$227.00	\$210.19
12X20	\$6,685.00	\$428.53	\$309.49	\$267.40	\$247.59
12X24	\$7,685.00	\$492.63	\$355.79	\$307.40	\$284.63
12X28	\$8,665.00	\$555.45	\$401.16	\$346.60	\$320.93
12X32	\$9,585.00	\$614.42	\$443.75	\$383.40	\$355.00
12X36	\$10,685.00	\$684.94	\$494.68	\$427.40	\$395.74

5/12 Pitch Roof

14X24	\$10,495.00	\$672.76	\$485.88	\$419.80	\$388.70
14X28	\$11,595.00	\$743.27	\$536.81	\$463.80	\$429.44
14X32	\$12,595.00	\$807.37	\$583.10	\$503.80	\$466.48
14X36	\$13,695.00	\$877.88	\$634.03	\$547.80	\$507.22
14X40	\$14,775.00	\$947.12	\$684.03	\$591.00	\$547.22
14x44	\$15,875.00	\$1,017.63	\$734.95	\$635.00	\$587.96
14x48	\$16,895.00	\$1,083.01	\$782.18	\$675.80	\$625.74
14x52	\$17,695.00	\$1,134.29	\$819.21	\$707.80	\$655.37

- 6' Wood Double Doors (72" clearance)
- 92" Wall Height
- 7/12 Roof Pitch on 12' wide and under
- 5/12 Roof Pitch on 14' wide
- 8" Overhang on Eaves and Gable



Colors Pictured:
Siding - Zook Gray
Trim - White
Roof - Gray

12' Wide Floor Width: 11'2". Eave to eave: 12'

ELITE SERIES

Size	Retail	24 mo	36 mo	48 mo	60 mo
8x12	\$5,446.00	\$349.10	\$252.13	\$217.84	\$201.70
8x16	\$6,066.00	\$388.85	\$280.83	\$242.64	\$224.67
10X12	\$6,016.00	\$385.64	\$278.52	\$240.64	\$222.81
10X16	\$6,916.00	\$443.33	\$320.19	\$276.64	\$256.15
10X20	\$7,816.00	\$501.03	\$361.85	\$312.64	\$289.48
12X16	\$7,706.00	\$493.97	\$356.76	\$308.24	\$285.41
12X20	\$8,716.00	\$558.72	\$403.52	\$348.64	\$322.81
12X24	\$9,716.00	\$622.82	\$449.81	\$388.64	\$359.85
12X28	\$10,696.00	\$685.64	\$495.19	\$427.84	\$396.15
12X32	\$11,616.00	\$744.62	\$537.78	\$464.64	\$430.22
12X36	\$12,716.00	\$815.13	\$588.70	\$508.64	\$470.96

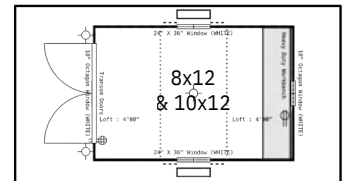
5/12 Pitch Roof

14X24	\$12,606.00	\$808.08	\$583.61	\$504.24	\$466.89
14X28	\$13,706.00	\$878.59	\$634.54	\$548.24	\$507.63
14X32	\$14,706.00	\$942.69	\$680.83	\$588.24	\$544.67
14X36	\$15,806.00	\$1,013.21	\$731.76	\$632.24	\$585.41
14X40	\$16,886.00	\$1,082.44	\$781.76	\$675.44	\$625.41
14x44	\$17,986.00	\$1,152.95	\$832.69	\$719.44	\$666.15
14x48	\$19,006.00	\$1,218.33	\$879.91	\$760.24	\$703.93
14x52	\$19,806.00	\$1,269.62	\$916.94	\$792.24	\$733.56

- 6' Wood Double Doors with Transom Windows (72" clearance)
- (2) 24"x36" Windows
- (2) Sets of Z-style Shutters
- (2) Painted Flower Boxes
- (2) Octagon Windows
- (2) Exterior Lamps (with switch)



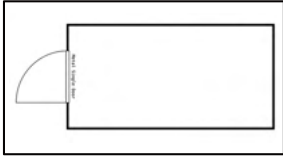
Colors Pictured:
Siding - White
Trim - Black
Roof - Black
Shutters & Flower boxes - Chestnut



- Deluxe Electrical Package
- (2) 4' Loft Sections
- Heavy Duty Workbench
- 7/12 Roof Pitch on 12' wide and under
- 8" Overhang on Eaves and Gable
- 92" Wall Height

12' Wide Floor Width: 11'2". Eave to eave: 12'

ECONOMY METAL UTILITY



Colors Pictured:
Siding - White
Trim - Charcoal
Roof - Charcoal



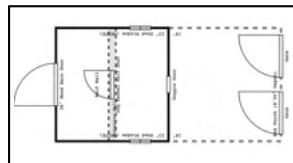
Colors Pictured:
Siding - Charcoal
Trim - Burnished Slate
Roof - Burnished Slate



Size	Retail	24 mo	36 mo	48 mo	60 mo
8x12	\$2,595.00	\$166.35	\$120.14	\$103.80	NA
8x16	\$3,195.00	\$204.81	\$147.92	\$127.80	NA
10X12	\$3,175.00	\$203.53	\$146.99	\$127.00	NA
10X16	\$3,895.00	\$249.68	\$180.32	\$155.80	NA
10X20	\$4,575.00	\$293.27	\$211.81	\$183.00	NA
12X16	\$4,495.00	\$288.14	\$208.10	\$179.80	NA
12X20	\$5,295.00	\$339.42	\$245.14	\$211.80	\$196.11

- 8' Wide comes with 4' Single Door
- 10' Wide and 12' Wide come with 6' Double Door
- 69" Wall Height
- Premium 2x4 Studs every 24"
- 2x6 Exterior Grade Floor Joists every 16"
- 8x12 has 2x4 Exterior Grade Floor Joists every 16"

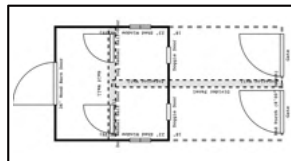
DOG KENNELS



Single Dog Kennel	24 mo	36 mo	48 mo	60 mo	
8x16	\$4,995.00	\$320.19	\$231.25	\$199.80	NA

Standard Options Include

- 2 gates
- 1 doggie door
- 1 entry door
- 2 windows
- Composite porch



Double Dog Kennel	24 mo	36 mo	48 mo	60 mo	
8x16	\$5,595.00	\$358.65	\$259.03	\$223.80	\$207.22

Standard Options Include

- 2 gates
- 2 doggie doors
- 1 entry door
- 2 windows
- 1 divider wall
- Composite porch.

Custom Sizes Available - Call for Pricing

EXTERIOR UPGRADES

- Lap Siding.....Ask Dealer For Pricing
- Shingles.....Add 4% of Base Model Price
- Painted Shutters.....\$50.00/pair
- 18" Painted Flower Box.....\$50.00 each
- 24" Painted Flower Box.....\$60.00 each
- 36" Painted Flower Box.....\$70.00 each
- Vertical Metal.....Ask Dealer For Pricing
- 12" Center Floor Joists.....\$0.50/sq.ft.
- 10 Lite Shed Dormer.....\$950.00
- 15 Lite Shed Dormer.....\$1,145.00
- 20 Lite Shed Dormer.....\$1,395.00

- 10 Lite Shed Dormer..... \$988.00
(Black Windows)
- 15 Lite Shed Dormer.....\$1,202.00
(Black Windows)
- 20 Lite Shed Dormer.....\$1,471.00
(Black Windows)

- Any Color Option on Barn Doors.....\$40.00
- Wainscot.....\$4.00/ft.
- 15X30 Air cond/window cutout.....\$75.00/frame
- Exterior Door Frame Out.....\$75.00/frame
- On-site Fee.....18% (Subject to location)
- Custom Colors.....Customer Provides Paint

Dormers



Exterior Lamps



Lap Siding



Painted Flower Box



Painted Z-Style Shutters



Wainscot



DOORS

9-Lite
Fiberglass Door



\$545.00

4-Lite
Fiberglass Door



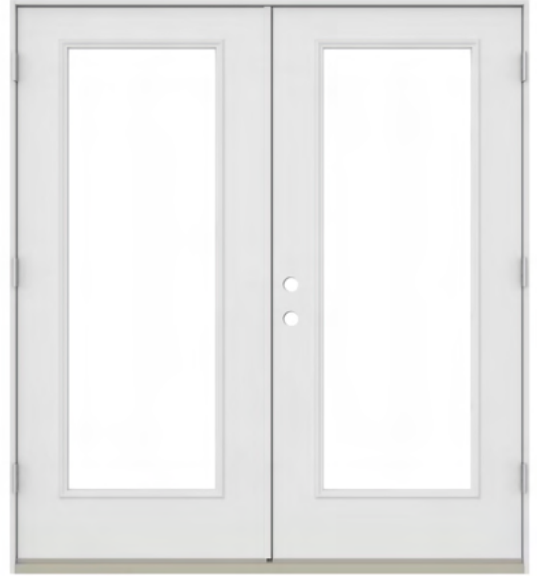
\$545.00

Solid Panel
Fiberglass Door



\$495.00

Active Full-light
Fiberglass French Door



\$1,345.00

Barn Doors



Single 36" - **\$130.00**
Double 72" - **\$225.00**

Roll Up Garage Door



6x7 - **\$745.00**
8x7 - **\$795.00**
9x7 - **\$875.00**

Requires 12" OC floor joists

WINDOWS

White Windows



- 18x23.....**\$95.00**
- 24x36.....**\$115.00**
- 30x36.....**\$135.00**

Thermal

- 24x36.....**\$260.00**
- 30x36.....**\$315.00**
- 36x48.....**\$430.00**
- 36x60.....**\$450.00**

18" Octagon Window



\$115.00

Black Windows



- 24x36.....**\$149.00**
- 30x36.....**\$179.00**

Thermal

- 24x36.....**\$399.00**
- 30x36.....**\$429.00**
- 36x48.....**\$489.00**
- 36x60.....**\$499.00**

36"x48" Casement Windows



\$545.00

Transom Windows 29"x10"



White - \$60.00



Black - \$79.00

18"x29" Transom Window

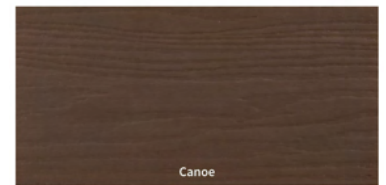


\$195.00

COMPOSITE DECKING



Peace of mind with composite decking comes standard on all our Cabins and Dog Kennels.



Post Colors



SIDE SHEDS

- 7' Depth X Length of Building
- Anchored During Setup
- Not Available on Lofted Models, Economy Metals, or 80" walls



Ask Dealer For Pricing

RAMPS



R-200 Two Piece Adjustable Ramp...\$250.00

R-300 Three Piece Adjustable Ramp...\$350.00

Stained Ramp Upgrade.....\$95.00

Removable Individual Sections are 21"x66"
Constructed with pressure treated 2x8 boards

INTERIOR UPGRADES

- **2-tier Shelving**.....\$12.00/ft.
- **3-tier Shelving**.....\$15.00/ft.
16" shelf depth, 17.5" shelf height
- **Heavy Duty Workbench**...\$12.00/ft.
20" workbench depth

Heavy Duty Workbench



- **Additional Loft Space**.....\$5.00/sq.ft.
- **Interior Wall Framing**.....\$15.00/ft.

3-Tier Shelving



SPRAY FOAM INSULATION

Closed Cell Spray Foam

\$2.85 bd/ft.

- Weather Resistant
- Fire Resistant
- Pest & Mold Resistant
- Excellent Thermal Barrier
- Adds Structural Integrity

Available for Walls, Roof, and Floor



ELECTRICAL PACKAGES

115V Plug N Play Packages

Standard Package	\$340.00
Includes 1 light, 1 outlet, 1 switch/outlet combo \$75.00 each for any additional lights up to (7) total.	
Deluxe Package	\$425.00
Includes 2 lights, 1 outlet, 1 switch/outlet combo, \$75.00 each for any additional lights up to (7) total.	
Basic Package	\$255.00
Includes 1 light, 1 switch/outlet combo.	

Package Add-Ons

Interior Light Fixture	\$85.00
Additional Switch	\$85.00
Three Way Switch	\$170.00
Exterior Lamp (each / switch included)	\$115.00
Motion Light	\$175.00
Flush Mount LED Lights	\$129.00



RV Power Inlet

Packages cannot be paired with breaker boxes.
More than 2 receptacles require a breaker box.

BREAKER BOX OPTIONS

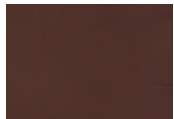
100 AMP Load Center Breaker Box	\$275.00
200 AMP Load Center Breaker Box	\$395.00
Interior Light Fixture	\$85.00
Interior Light Switch	\$85.00
Switch/Outlet Combo	\$150.00
110 Receptacle	\$85.00
30 AMP 220 Receptacle	\$400.00
50 AMP 220 Receptacle	Call for Pricing

Additional charges may apply for any wiring
footage exceeding 25 feet.

ROOF / METAL COLORS



Black



Brown



Burgundy



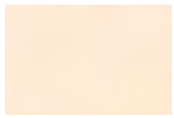
Burnished Slate



Barn Red



Charcoal



Ivory



Clay



Forest Green



Gallery Blue



Patriot Red



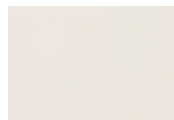
Mocha Tan



Hawaiian Blue



Galvalume



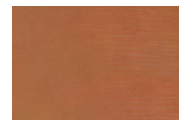
Lightstone



White



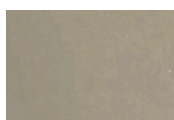
Gray



*Copper



Colony Green



Buckskin



Charcoal Shingle



Weathered Wood Shingle



Barkwood Shingle

SIDING / TRIM / DOOR COLORS



Black



Dark Brown



Wild Grasses



Burnished Slate



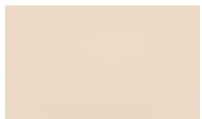
Mountain Red



Zook Gray



Pequea Green



Navajo White



GP Clay



Reihl Green



Shale



Pinnacle Red



Buckskin



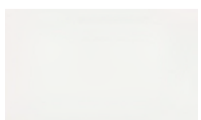
Avocado



Wedgewood Blue



New Holland Beige



White



Deep Ocean



Bronze

SIDING / TRIM STAIN COLORS



Chestnut



Weathered Grey

Stained trim must match siding

Composite Porch Colors



Canoe



Lake Fog

*Actual Colors May Vary

*Additional charges may apply for Copper.

*Custom colors available if customer provides paint.

OUR COMMITMENT

H & S Portable Buildings is committed to serving you. We use all top quality products and materials.

We value quality craftsmanship as much as you do.
All our buildings are inspected before they get delivered to ensure you are getting the quality you deserve.

We value your feedback. Let us know how we are doing at hsportablebuildings.com or on Facebook at H & S Portable Buildings.



H & S Portable Buildings

**BUILDING EXCELLENCE
DELIVERING SATISFACTION**

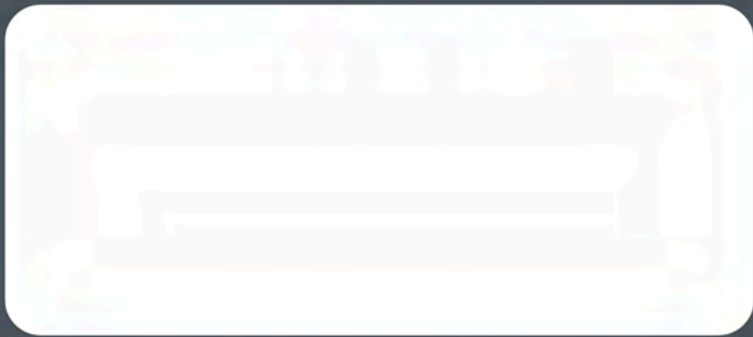


Questions or additional information email handsportable@gmail.com

hsportablebuildings.com

WARRANTY CALL (256) 462-1331

Dealer Information



Scan the code to design your shed!



Visit our website at www.hsportablebuildings.com
or scan the QR code above to customize your building today

453 Joe Dutton Rd. Danville, AL 35619
(256) 462-1331