

Model 400
413 sf

TABLE N1102.1.2 2020 INTERNATIONAL RESIDENTIAL CODE
INSULATION AND FENESTRATION REQUIREMENTS BY COMPONENT

NOTE: see N1102.1.2 for notes and clarification

CLIMATE ZONE	FENESTRATION U-FACTOR	SKYLIGHT U-FACTOR	CEILING R-VALUE	WOOD FRAME R-VALUE	MASS WALL R-VALUE	FLOOR R-VALUE	BASEMENT WALL R-VALUE	CRAWL SPACE WALL R-VALUE
5 A	0.35	0.60	R-38	R-20, 13+5	R-13,17	R-30	R-10,13	R-15,19

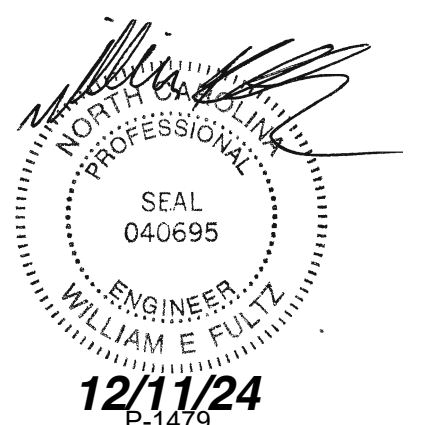
CLIMATE ZONES
N1101.7 (R301.1)
see 2020 IRC for county zones

For Home Located in Yancey County North
Carolina Zone 5
Special Mountain Region
per Jon England, Yancey County

Building Area 413 sf
Use Group: f
Construction Type R-3
Fire Rating Ext. Wall 5
0 HR @ 5'
Design Temperatures 72 H, 75C
Indoor 10 F
Outdoor Degree Days 4500

Distance to Lot Line NA
Wind Speed 115 mph Exp. C
(Table R301.2(4))
Seismic Design Category B
Table R301.2(7)
Building Height 16'
Floor Live Load 40 psf
Floor Dead Load 10 psf
Roof Load 20 psf
Table R301.2(1) Climatic and
Geographic Criteria

Weathering: Moderate
Frost line depth: 18"
Table R301.2(1)



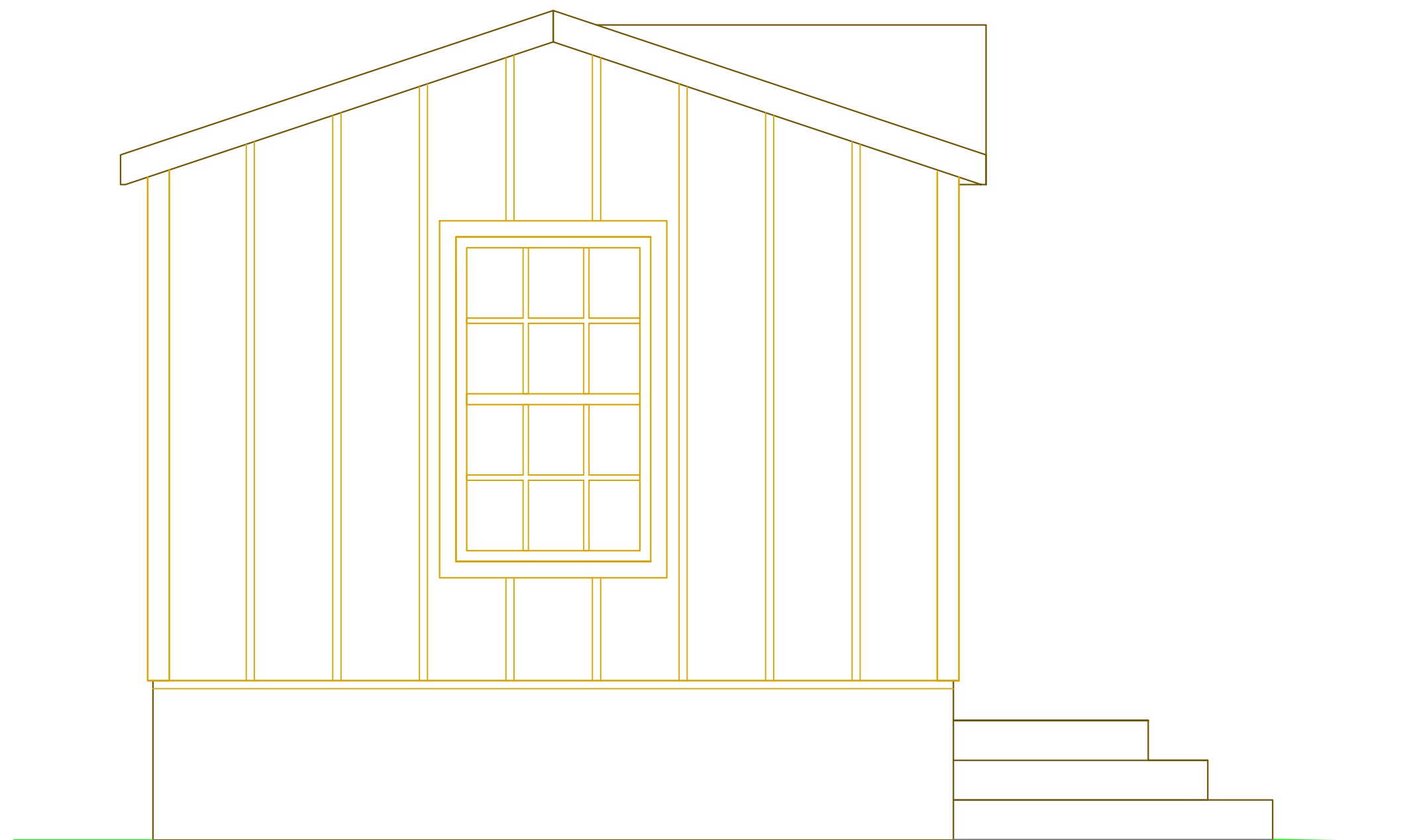
1 Floorplan



Scale: DO NOT SCALE
Plan Date: 12/11/2024

Tiny Homes
Model 400

Left Elevation

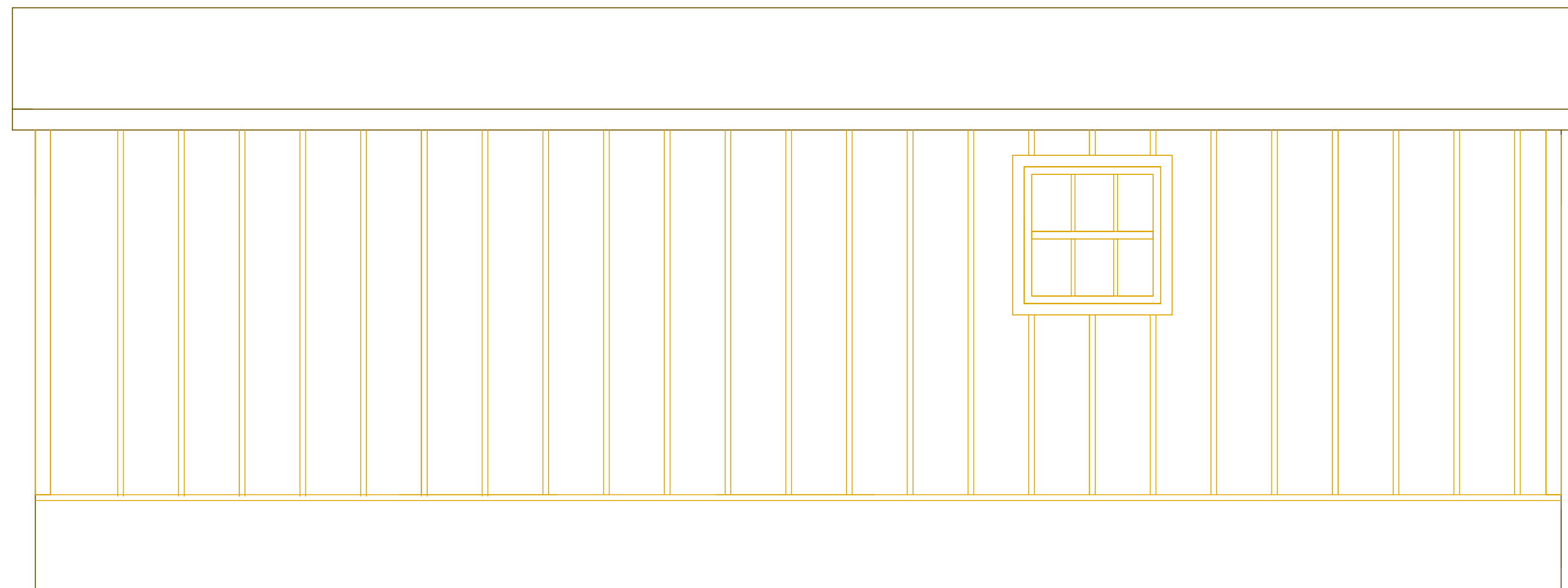


Front Elevation



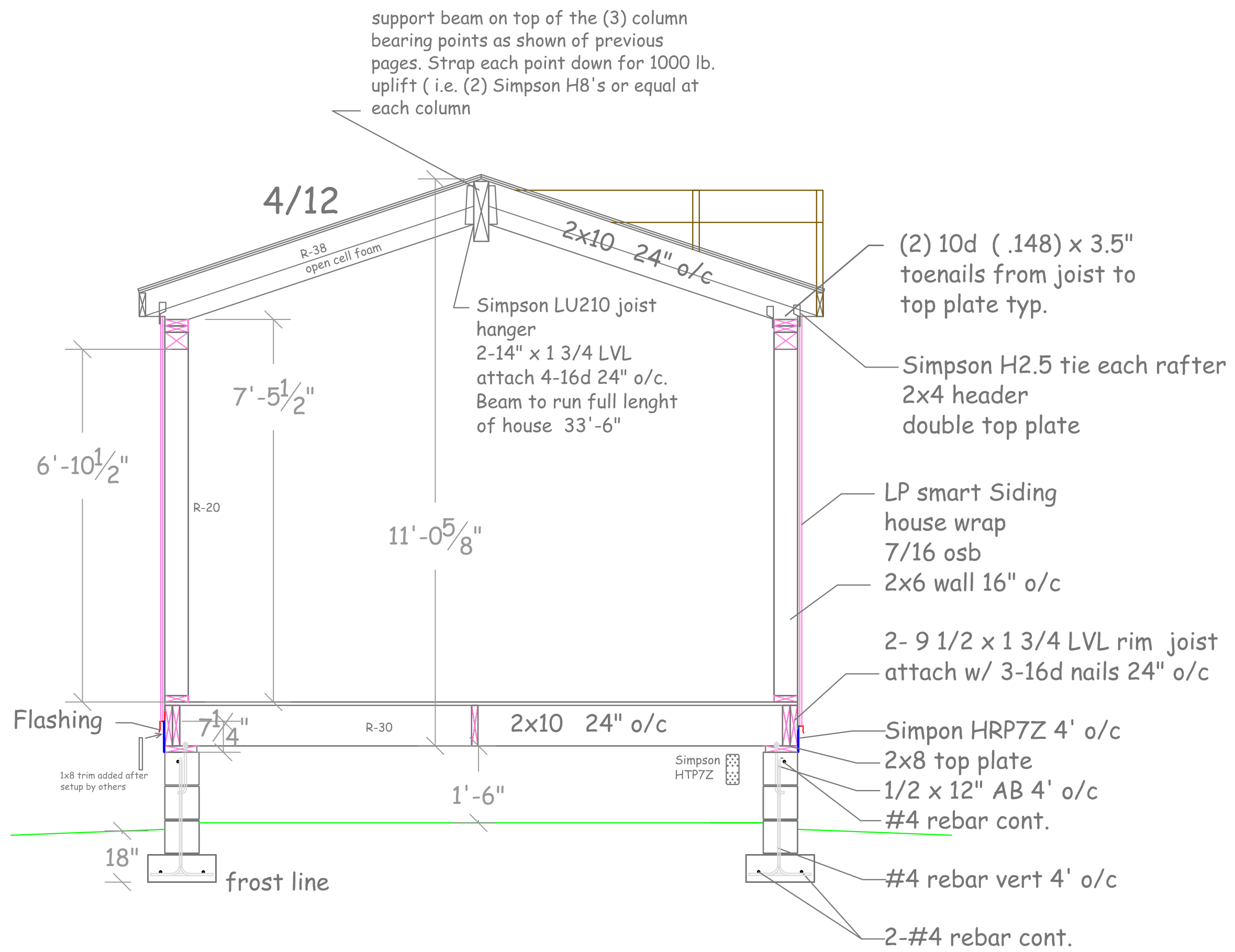
site built cmu stem wall by others

Rear Elevation



site built cmu stem wall by others

support beam on top of the (3) column bearing points as shown of previous pages. Strap each point down for 1000 lb. uplift (i.e. (2) Simpson H8's or equal at each column



3 Elevations



Scale: DO NOT SCALE
Plan Date: 12/11/2024

Tiny Homes Model 400

Standard Model 400

Plans are property of KGF Builders